

Anti-Rfa3/Rpa3 (*S. cerevisiae*) antibody, rabbit polyclonal

62-152 50 ul

Storage: Shipped at 4°C and store at -20°C.

Applications: Western blotting (1/2,000 dilution). Not tested for other applications

Reactivity: *S. cerevisiae* Rfa3 protein.

Immunogen: Recombinant Rfa3 protein

Antibody: Rabbit antiserum added with 0.05% sodium azide.

Background: Subunit of heterotrimeric Replication Protein A (RPA); RPA is a highly conserved single-stranded DNA binding protein complex involved in DNA replication, repair, recombination; RPA protects against inappropriate telomere recombination, and upon telomere uncapping, prevents cell proliferation by a checkpoint-independent pathway; with Sgs1p-Top2p-Rmi1p, stimulates DNA catenation/decatenation activity of Top3p; protein abundance increases in response to DNA replication stress

RFA3 encodes 122 amino acids with molecular mass of 13,816

Data Link: UniProtKB [P26755](#) (RFA3_YEAST), SGD [RFA3/overview](#) RFA3 / YJL173C

Reference: This antibody has not been used in publication.

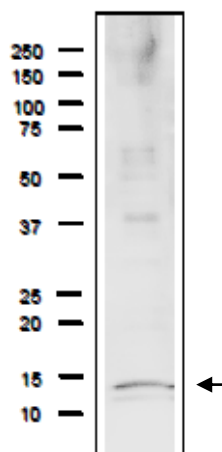


Fig. Detection of endogenous Rfa3 protein in whole cell extract of *S.cerevisiae*.

The extract of strain BY4741 (20 μ g) was separated on SDS-PAGE 10-20% gradient gel. The anti-Rfa1 antibody was used at 1/2,000 dilution. As the second antibody, HRP-conjugated goat anti-rabbit IgG (ab97051) was used at 1/10,000 dilution. Molecular mass is 13.8 kDa